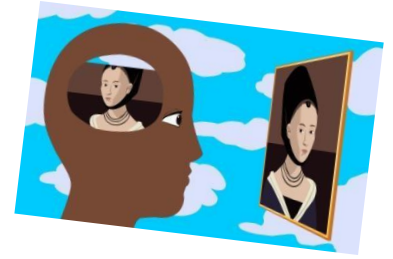




HOW TO ANALYSE A PAINTING



I- INTRODUCING A PAINTING

This artwork is a/ an... (+ type of artwork*)

It is entitled..... (+ title)

It was painted/ sculpted/ carved/ drawn/ made by... (+ name of the artist)
(+ short biography)

This work of art deals with/ talks about/ is about... (+ topic)

It was completed in.... (+ date)
or

It dates back to... the Middle Age, the Renaissance... (+ era)

This piece of art is currently displayed/exhibited/ housed in... (+ place of exhibition)

*a painting, a sculpture, a drawing, a photography, a printmaking, a video...

II- COLOURS AND LIGHTS



1. Colours and hues:

It's a black-and-white painting. The atmosphere/mood is...

The dominating/ main colours are

The artist uses colors such as.....

The picture is painted in colours.

The colours contrast with each other because there are...

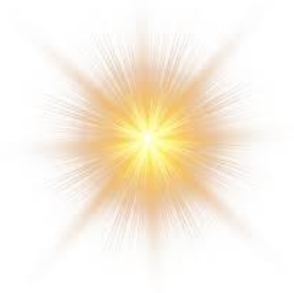
VOCABULARY

- Lively, vivid, intense, bright, brilliant, vibrant, rich, bold, violent ≠ dull, flat, insipid, plain, pale, subdued, quiet, weak,
- cold => warm=> hot
- subtle, light ≠ dark
- natural, pure ≠ artificial
- complementary, harmonious, mixed, blended ≠ contrasting, clashing, discordant
- monochromatic, uniform, unicoloured ≠ colorful, many-hued

2. Light:

VOCABULARY

- The scene is backlit, front lit, side lit, top lit...
- a direct/ an indirect light, a reflected light, there isn't any directional light source.
- natural (the sun, the stars, the moon, a flash of lightning...)
≠ artificial (the flame of a candle that flickers, a lamp, a light bulb, a TV...)
- cool, blue, gray ≠ warm, yellow, red, orange
- dim, faint, gentle, muted, soft ≠ brilliant, bright, glowing, intense, sharp



The scene is....backlit/ front lit... because the light comes from....

There is/are... source(s) of light coming from....

The light is *artificial* as it emerges from...

The.... light(s) up/ illuminate(s)/ brighten(s) up

III- LINES AND MOVEMENTS

THE MEANING OF LINES:

- **Leading lines:** may manipulate the viewer's gaze, directing vision or lead the eye to focal points;
- **Parallel lines:** may create a sense of depth or movement through space within a landscape;
- **Horizontal lines:** may create a sense of stability and permanence;
- **Vertical lines:** may suggest height, reaching upwards or falling;
- **Perpendicular lines:** may suggest rigidity, strength;
- **Angular / diagonal lines:** may suggest tension or unease;
- **Chaotic lines:** may suggest a sense of agitation or panic;
- **Curving lines:** may suggest nature, peace, movement or energy.



The painting is composed of ... parts...
 It's... (+ *composition and shapes*) because...
 The diagonal lines convey an impression of...
 The horizontal lines suggest a feeling of...
 The vertical lines communicate a sense of...
 The diagonal line crosses the painting to show...
 The lines converge into... because the focus is...
draws the attention of the viewer...

- COMPOSITION AND SHAPES:**
- symmetrical, balanced, even ≠ asymmetrical, unbalanced, uneven, chaotic
 - distorted ≠ clear
 - blurred
 - abstract, figurative ≠ representational, realistic
 - geometric, angular, cubist
 - elongated

IV- ARTISTIC TECHNIQUES AND ARTISTIC MOVEMENTS

1. Texture

Flat, polished, smooth ≠ rough, rugged, coarse, uneven

2. Artistic technique:

- acrylic painting
- anamorphosis
- camaieu
- chiaroscuro
- collage
- fresco painting
- gouache
- graffiti
- miniature painting
- mural
- oil painting
- panel painting
- trompe l'œil
- watercolour painting...

3. Artistic movements

Art Deco, c. 1920s–1940s

Art Nouveau, c. 1890–1910

Barbizon school, c. 1830s–1870s

Cubism, c. 1906–1919

Dada, c. 1916–1922

Expressionism, c. 1890s–1930s

Fauvism, c. 1900–1910

Impressionism, c. 1860s–1920s

Modernism, c. 1860s-ongoing

Naturalism c. 1880s–1900s

Neo-Classicism, c. 1780s–1900s

Pointillism, c. 1880s–1910s

Pont-Aven School, c. 1850s–1890s

Realism, c. 1850s–1900s (decade)

Romanticism, c. 1750s–1890s

Symbolism 19th c ...

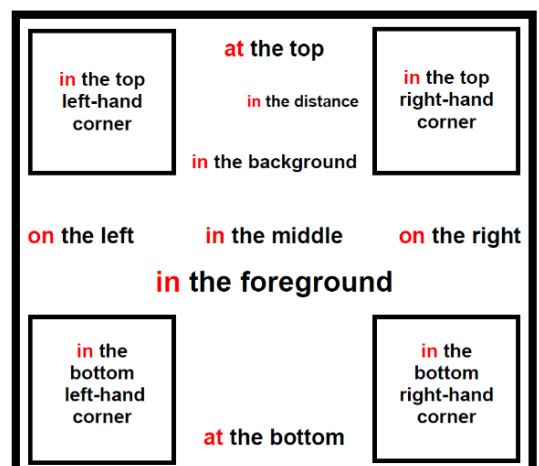


This work of art belongs to....because...

V-DESCRIBING THE SCENE

The scene takes place in...because there is/are...
 The painting depicts/ portrays/ shows/ represents...
 In this painting, the main character(s) is/are +V-ING... (+actions)
 He/she looks/ is...(+ adjectives of feelings/ physical description)...
 The characters look as if they....

In the foreground, there is a..../ In the background, there are....



In the upper part/ at the top, we can see...
In the lower part/at the bottom, we can catch a glimpse of...
In the far distance, we can make out the outline of ...



Positions:
 next to ≈ near ≠ in the far distance / behind ≠ in front of / opposite
 above ≈ on top of ≠ under ≈ below
 between / on/ in ≈ inside ≠ outside

IV- INTERPRETING THE NARRATIVE

The atmosphere is....since....
 The mood conveys an impression of...
 The artist wants to express....

● Expressing suppositions:



- It's most likely that...
- There's a good chance that...
- It's highly possible that...

- It's quite plausible that...
- I'm quite sure/certain that...

- I think/ suppose/ assume/ believe...
- Maybe/ Perhaps,

- It's unlikely that...
- It's impossible that...

VOCABULARY OF MOOD AND ATMOSPHERE

- calm, peaceful, relaxed, tranquil, casual
- light-hearted, cheerful, happy, joyful, merry
- romantic
- depressed, gloomy, miserable, sad, somber, tearful, unhappy
- oppressive, stifling, suffocating, heavy
- aggressive, angry, chilling, dark, distressing, frightening, violent
- energetic, stimulating,
- thought-provoking

- boring, dull, lifeless, insipid
- dreamlike, oneiric

The artist wants to criticize/ to show/ to stress/ to emphasize/ to point out/ to highlight/ underline...
 The painter uses...to express...
symbolise(s)/represent(s)....

VII- EXPRESSING OPINIONS

To my mind,...
 In my opinion,...
 As far as I'm/we are concerned,...
 From my point of view,...
 It seems to me/ us/ Paul that,...
 For me, Emma,...
 All of us/ None of us/ one, two... of us think(s) ...
 According to him/her/ them/ Elise..., **according to me***...,



I agree with... ≠ I disagree with...

I (really) like/love/ enjoy this work of art because...
 I (truly) hate/ detest/dislike this painting because...
 I'm not really into...(art, modern paintings, sculptures...)because...
 I don't really care about.../ I'm not really interested in...

VOCABULARY OF FEELINGS

- Interesting , inspiring, captivating , mesmerizing, thought-provoking, relevant ≠ insipid, bland, flat
- beautiful, gorgeous, amazing, sublime, magnificent, breathtaking ≠ ugly, awful, terrible
- unique, original, unusual => far-fetched, exaggerated, absurd ≠ common, ordinary, rudimentary, unsophisticated
- expressive, graphic, emotional, dramatic, tragic, poetic
- light-hearted, funny, hilarious ≠ sad, gloomy, depressing, dark
- strange, weird, bizarre, odd, puzzling, mysterious, mystical
- underrated ≠ overrated